



## DETAILS:

**Size:** 10' L x 3'10" W | 3.05 m L x 1.18 m W

**Thickness:**

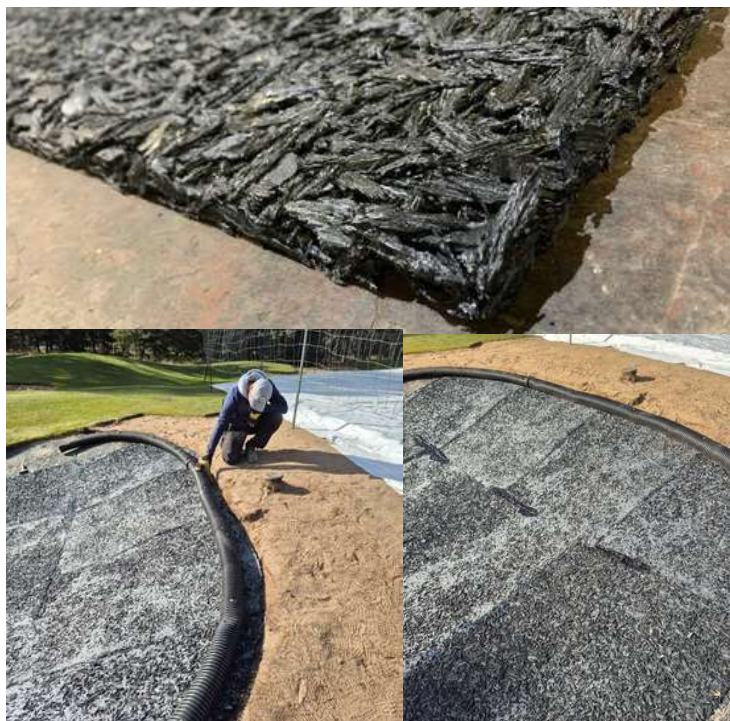
• 1/2" TO 3/4" , 89 lbs |  
12.7mm TO 19.05mm, 40.4 kg

**Applications:**

Bunker Liners, Car Washes, Dog Wash Stations, Garages, Barn Stalls

**Shipping:**

FOB Manufacturer



## ADVANTAGES:

- Creates a barrier between the base of the bunker and sand helping keep debris out of the sand saving on maintenance and lowering sand replacement costs.
- These permeable mats allow water to pass through easily, preventing pooling and maintaining surface stability.
- Their durable, high-performance design makes them ideal for any environment where effective water permeability is essential — including car washes, dog wash stations, garages, barns and other wet or frequently cleaned areas.
- Maintain a clean, dry, and safe surface under all conditions.

*5-6 tires are recycled  
to make one mat!*

